

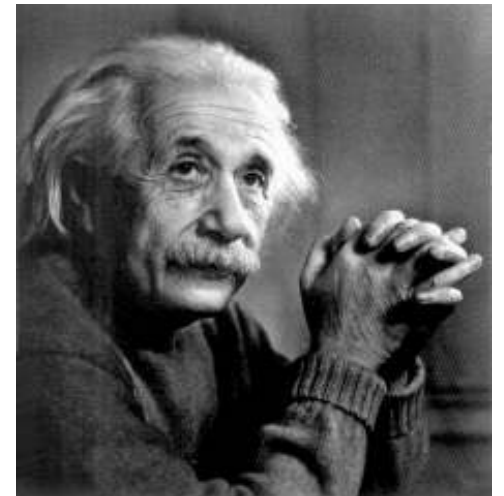


California Partnership for the
San Joaquin Valley

Water Quality, Supply and Reliability
The San Joaquin Valley Regional Water Plan
Blueprint Learning Network
September 26, 2007

The significant problems we face cannot be solved by the same level of thinking that created them.

Albert Einstein



Water Management Transitions

Era of Conflict

Westward Focus

Water and Power Development

Environmental/Priorities

1850

1900

1960

2005



2005 - Expanding the Vision

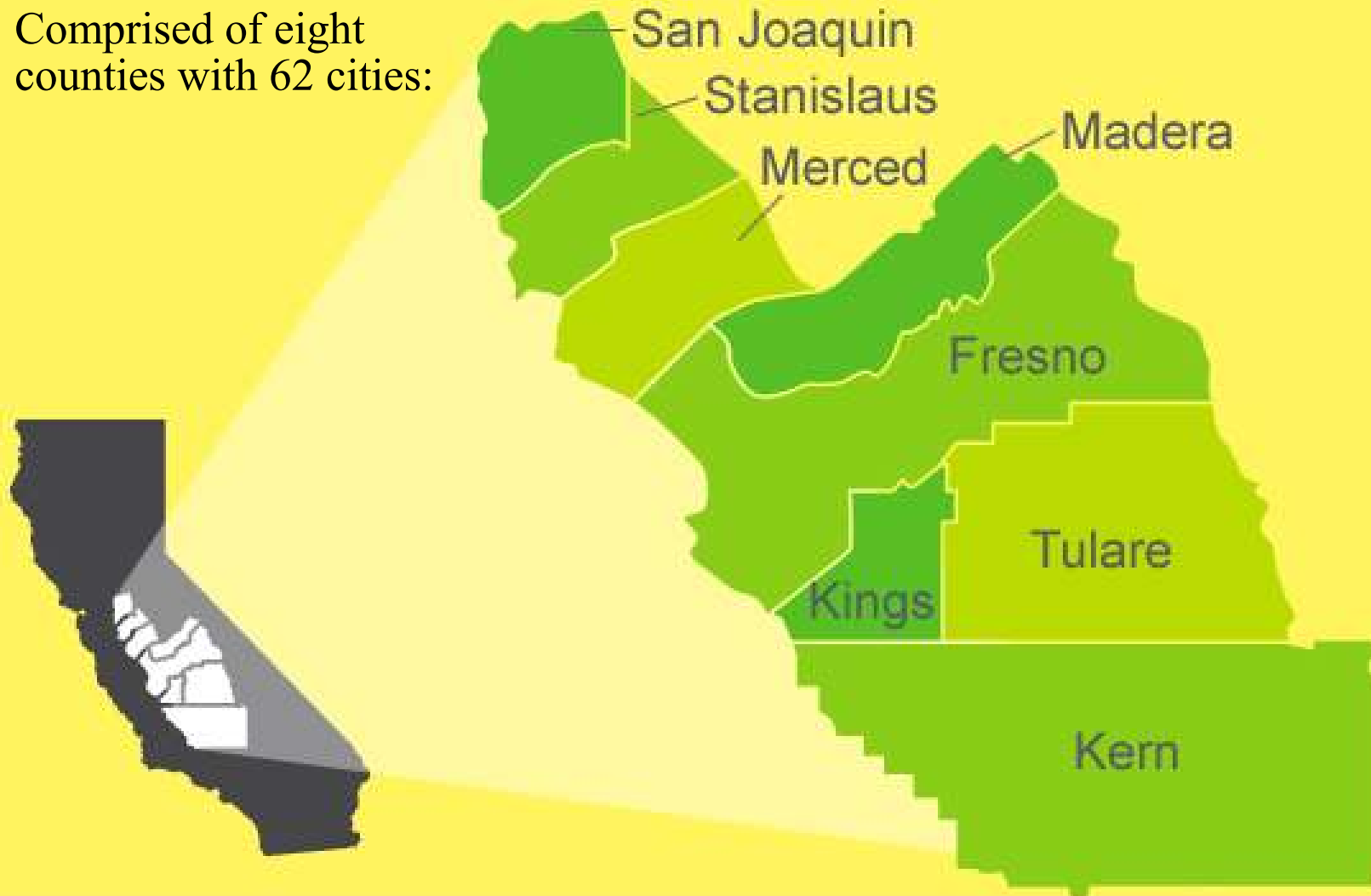
Merger of the Federal water planning with the California Partnership for the San Joaquin Valley

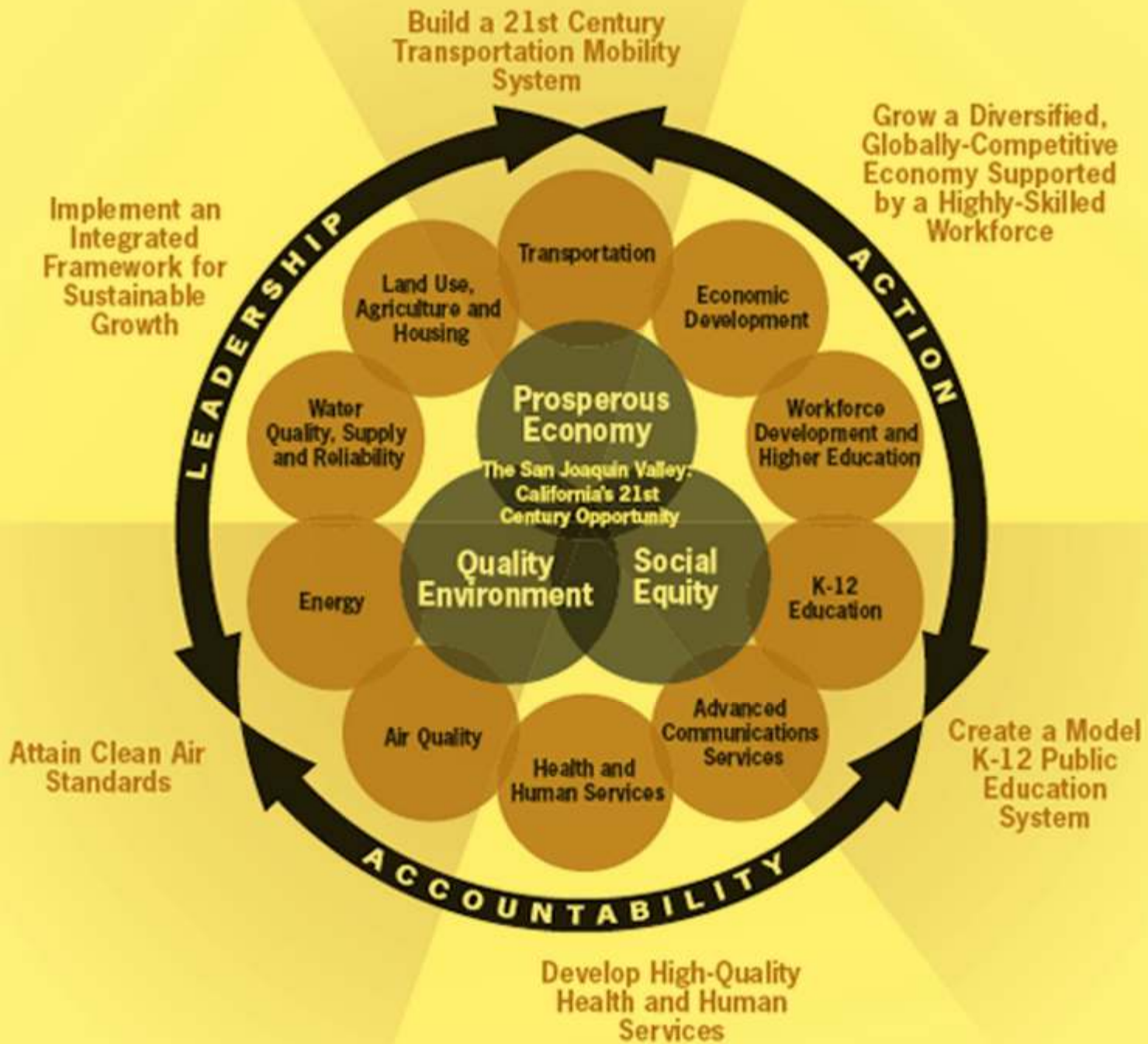
- *The Federal Plan was initiated
by the Valley Congressional
delegation*



The San Joaquin Valley

Comprised of eight counties with 62 cities:





Water Quality, Supply and Reliability

GOAL 1

- **Develop and implement a comprehensive San Joaquin Valley Regional Water Plan.**
 - Provide management, technical and administrative support for development of the San Joaquin Valley Regional Water Plan
 - Coordinate and integrate the San Joaquin Valley Regional Water Plan with other key plans for management of the region's water resources.



Water Quality, Supply and Reliability

GOAL 2

- **Strengthen levees in the Sacramento-San Joaquin Delta and San Joaquin Valley to safeguard regional water quality and quantity, and provide flood control.**
 - Improve the levees of the San Joaquin, Kings and Kern Rivers and tributaries to assist communities meet 100-year+ flood protection standards and levee certification standards from the FEMA.
 - Improve significantly the integrity of the Delta levee system.



Water Quality, Supply and Reliability

GOAL 3

- **Augment surface, groundwater banking programs and recycled water projects in the San Joaquin Valley.**
 - Complete Upper San Joaquin River Basin Project
 - Promote and support up to five conjunctive use projects that can be commissioned or enhanced in the 2007 – 2017 period.
 - Develop recycled and inland brackish water projects to expand regional water supplies.



Water Quality, Supply and Reliability

GOAL 4

- **Develop and implement water quality and salinity management infrastructure**
 - Develop a Salinity Management Plan to be implemented as an update to the San Joaquin River and Tulare Lake Basin Plans
 - Ensure all communities have adequate sanitary sewage disposal facilities.
 - Ensure all communities provide water that meets state and federal drinking water standards.



Water Quality, Supply and Reliability

GOAL 5

- **Expand Environmental Restoration & Habitat Conservation Strategies**
 - Develop and implement a San Joaquin Valley Ecosystem Restoration Plan.
 - Complete San Joaquin River restoration consistent with the settlement between the Friant Water Users Authority and the Natural Resources Defense Council (NRDC)



Water Quality, Supply and Reliability

GOAL 6

- **Expand agricultural and urban water-energy use efficiency programs.**
 - Implement cost effective, results-oriented, agricultural water-energy use efficiency diagnostic, repair and retrofit projects.
 - Implement a public awareness and education program about water-energy use conservation.



Integrated Regional Water Management

Why IRWM?

- Water management actions and issues are interconnected
- Issues don't obey political boundaries
- A variety of entities are responsible for different actions
- IRWM promotes a sustainable, efficient approach to water management by bringing together interests, issues, and solutions



Integrated Regional Water Management

Integration Considerations

- Water quality and quantity
- Demand management and supply enhancement
- All beneficial water uses
- Upstream, downstream, and instream effects
- Land use, energy, and other resources
- Broad societal costs and benefits



Integrated Regional Water Management

Participants

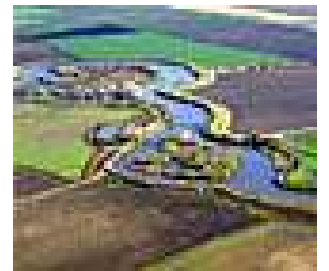
- Water purveyors
- Wastewater agencies
- Flood control agencies
- Cities & counties
- Native American tribes
- Self-supplied water users
- Stakeholder organizations
 - Industry
 - Environmental
 - Community
- State, federal, and regional agencies or universities



Integrated Water Management

Quality of Life

- Predicting and meeting demand for agricultural, municipal and industrial, and environmental needs in an integrated and collaborative process
- Must Be Forward Thinking



Resource Management Strategies

Reduce Water Demand

- Agricultural Water Use Efficiency
- Urban Water Use Efficiency

Improve Operational Efficiency & Transfers

- Conveyance
- System Reoperation
- Water Transfers

Increase Water Supply

- Conjunctive Management & Groundwater Storage
- Desalination –Brackish & Seawater
- Precipitation Enhancement
- Recycled Municipal Water
- Surface Storage – CALFED
- Surface Storage - Local

Improve Water Quality

- Drinking Water Treatment and Distribution
- Groundwater/Aquifer Remediation
- Matching Quality to Use
- Pollution Prevention
- Urban Runoff Management

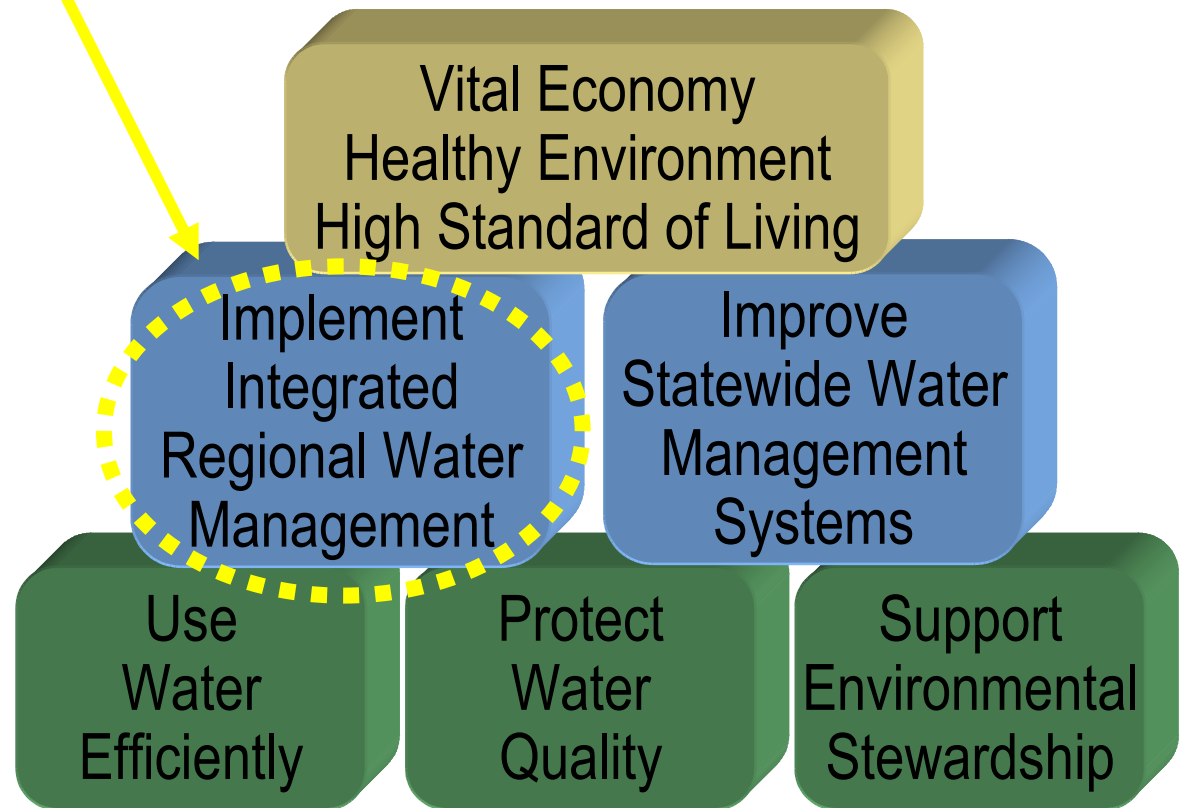
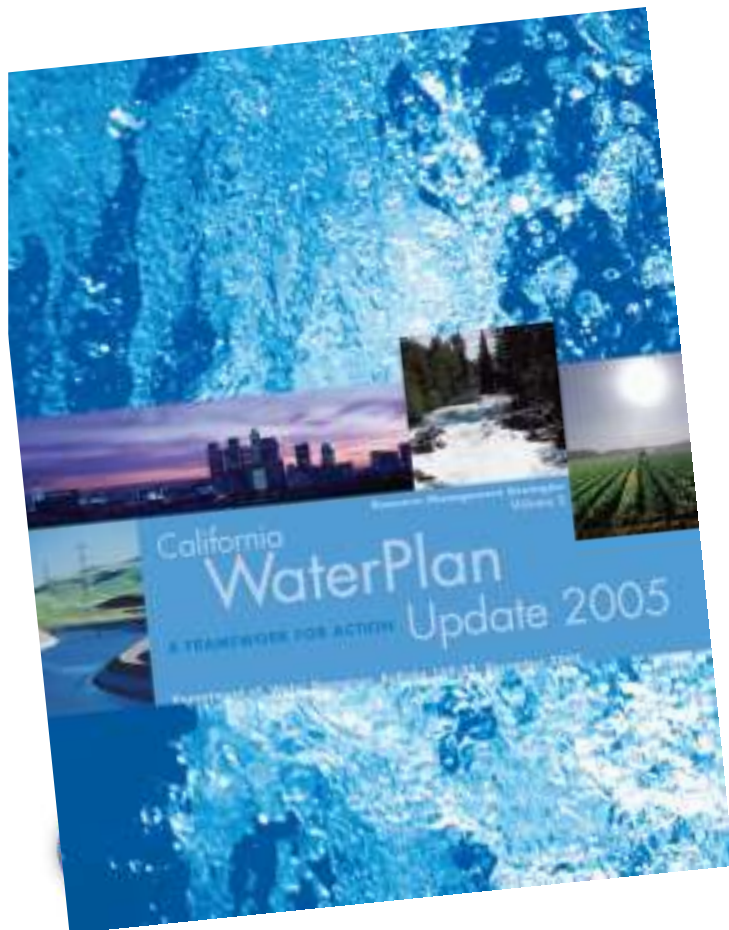
Practice Resource Stewardship

- Agricultural Lands Stewardship
- Economic Incentives (Loans, Grants, and Water Pricing)
- Ecosystem Restoration
- Floodplain Management
- Recharge Areas Protection
- Urban Land Use Management
- Water-Dependent Recreation
- Watershed Management



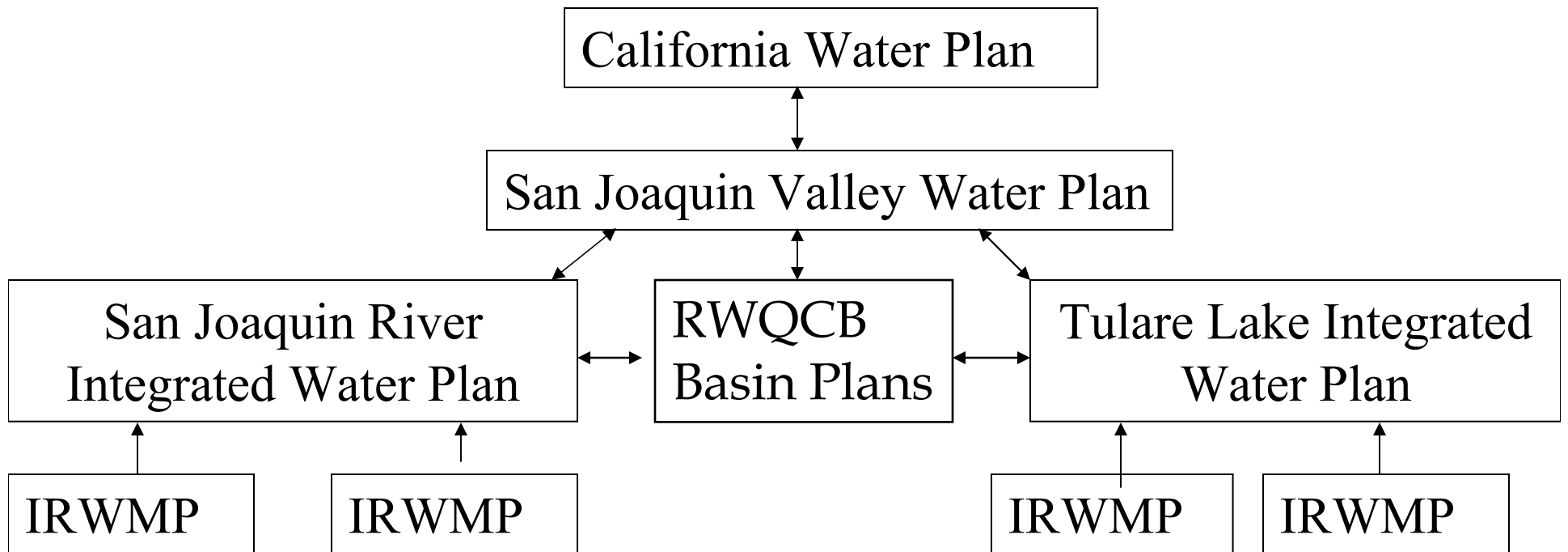
Integrated Regional Water Management

A cornerstone of the California Water Plan



Development of the San Joaquin Valley Water Plan

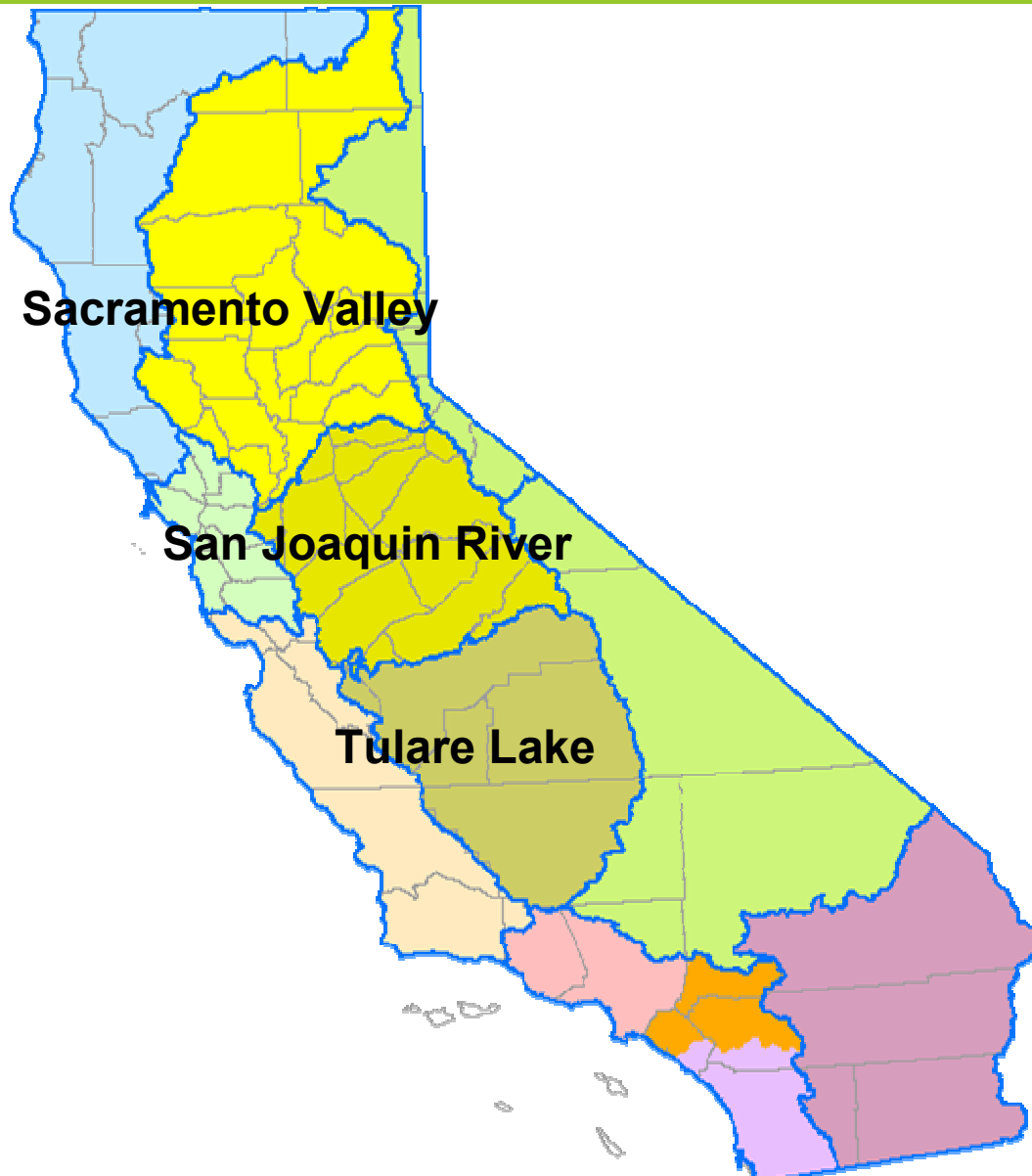
California Water Institute



IRWMP = Integrated Regional Water Management Plan
RWQCB = Regional Water Quality Control Board



Hydrologic Regions of the Central Valley



IRWMPs

Tulare Lake Region

Upper Kings River Forum/Kings River Conservation District

Poso Creek

Kaweah – Delta

Kern County Water Agency

Westside Regional Resource Plan – SLDMWA

San Joaquin River Region

Madera County

Merced County

NE San Joaquin County Groundwater Banking Authority



SJV IRWMP Progress

- Four Workgroups and development of the recommendations for the Strategic Action Plan
- Executive Director early May
- Listening Sessions
- Development of the SJV Plan engagement team
- Technical Consultants
- Communications, Webmaster, GIS,
- Liaison with CV Regional Water Quality Control Board
- Coordination with the hydrologic basins
- Facilitator – Center for Collaborative Policy

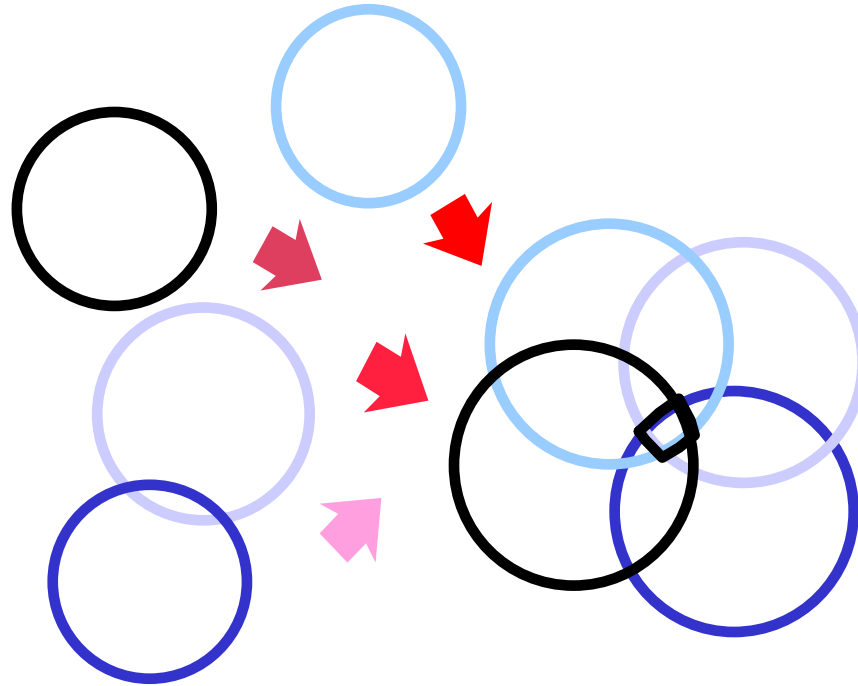


Engagement of Agencies

- Department of Water Resources Division of Planning and Local Assistance (IWRMP)
- California Department of Fish and Game
- Department of Conservation
- The Resources Agency
- Bureau of Reclamation
- Fish and Wildlife Service
- Association of California Water Agencies (ACWA)
- COGS – [Link to the Blueprint](#)
- Local Government Commission – Ahwahnee Water Principles - [Another link to the Blueprint](#)
- San Joaquin Valley Water Coalition



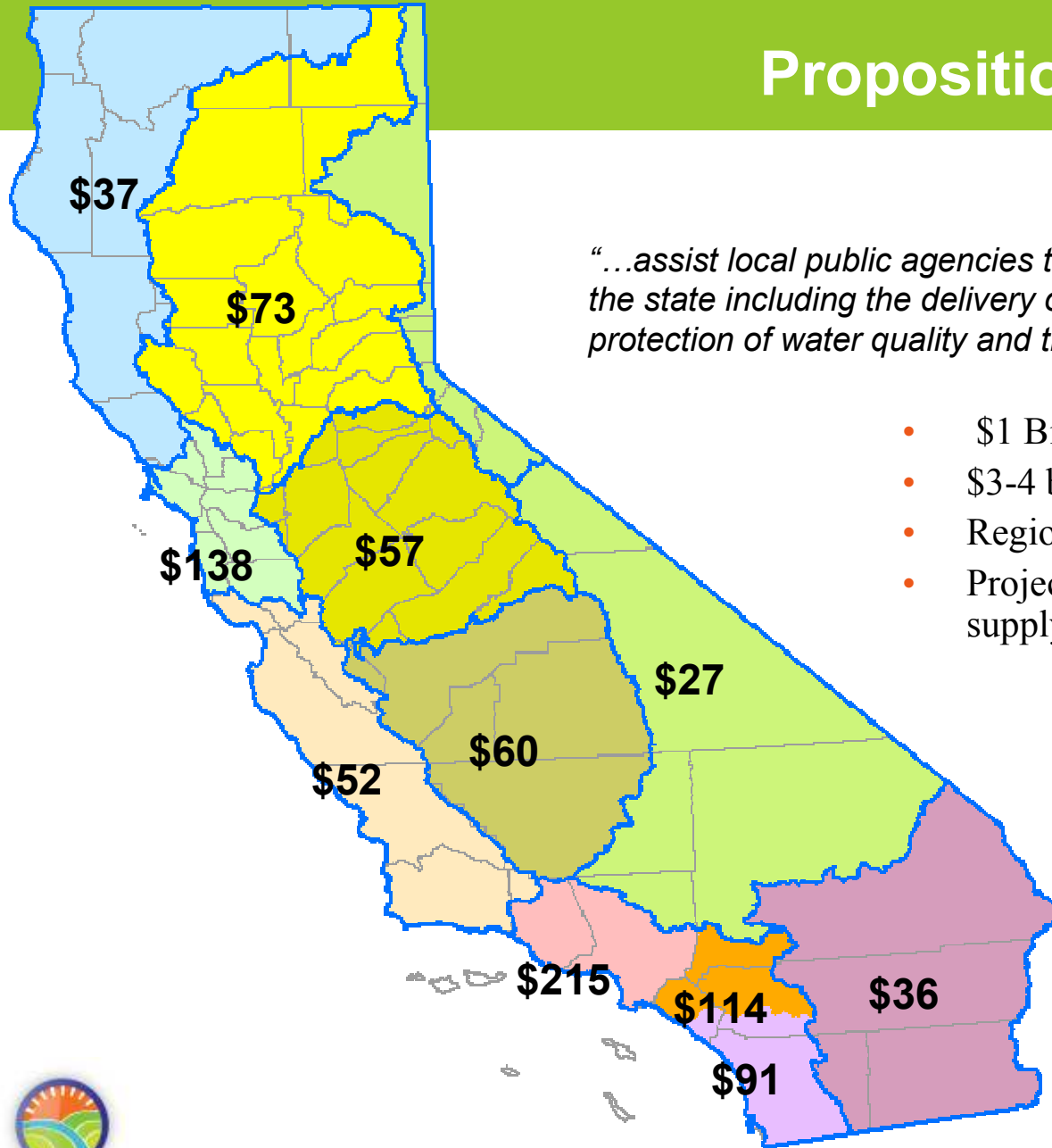
Integrated Regional Water Management Plans



Integration = Projects



Proposition 84



"...assist local public agencies to meet long term water needs of the state including the delivery of safe drinking water and the protection of water quality and the environment."

- \$1 Billion for IRWM grants
- \$3-4 billion local cost share expected
- Regional allocations
- Projected 1.2 million acre-feet of water supply



Proposition 84 at a Glance

Program

Amount of Funding

• Safe Drinking Water and Water Quality	\$525 million
• Integrated Regional Water Management	\$1 billion
• Flood Control	\$800 million
• Statewide Water Planning and Design	\$65 million
• Protection of Rivers, Lakes and Streams	\$928 million
• Forest and Wildlife Conservation	\$450 million
• Coastal Protection	\$540 million
• Parks / Nature Education Facilities	\$500 million
• Sustainable Communities / Climate Change	<u>\$580 million</u>
•	<i>Total \$5.4 billion</i>

• *Slide courtesy of ACWA*

- **Integration with the “Blueprint” process in some of these categories is critical such as flood control and sustainable communities.**



Integrated Water Management and Blueprint Linkages

- Long lead times for implementation (2030-2050)
- Land use a common thread
- Connectivity is also a common principle, people either go where water is or water is moved to where people go, planning is the tool to make the decision cost-effective, as in planning for development and transportation
- Land use and water management need to be complimentary; e.g. we should not pave over groundwater recharge areas without a mitigation plan
- Other common issues include; Climate Change, Air Quality, Energy Use, Disadvantaged Communities and Environmental Justice



Integrated Regional Water Management and Blueprint linkages

- **Integration at the local, sub-regional, and SJ Valley is critical**
- **Linkages to Northern and Southern California are on the agenda**
 - **Delta Vision and Bay Delta Conservation Plan**
 - **Southern California Water Committee**



Engaging in the Process

- Reminder, the SJV will have available \$117 million for integrated water management as well as other bond funds.
- **Seeking leadership to help get the right people to the table.**
- Step beyond their own local needs for the benefit of the Valley
- We need the structure to be able to implement a valley-wide effort
- Success is an organization that adapts to needs of the Valley.
- **If \$\$\$ are the only focus as opposed to Valley-wide team building, the effort will not succeed.**



Integrated Regional Water Management

- Foster Regional Partnerships and Resolve Conflicts
- Integrate Resources Management Decisions
- Diversify Regional Water Portfolios
- Reduce Costs and Maximize Value
- Provide for Sustainability



Integrated Planning Opportunities

**Sub-Regional
IRWMPs**

**Tulare Lake & San Joaquin
River Regional Plans**

**San Joaquin Valley
Regional Water Plan**



If you're going to eat elephants,
you have to do it in bite-sized
pieces - but you don't have to eat
the whole elephant.

Not Albert Einstein



CWI – IRWM CONTACT TEAM

David Zoldoske, Director, (559) 298-2066
david_zoldoske@csufresno.edu

Jim Tischer, Program Manager, (559) 260-6148
jtischer@csufresno.edu

Kathy Wood, IRWM Executive Director, (559) 298-6072 x201
kawood@csufresno.edu

Theresa Sebasto, Communications, (559) 298-6072 x212
tsebasto@csufresno.edu

Sarge Green, Technical Consultant, (559) 647-9198
sgreen@csufresno.edu

Karl Longley, (559) 298-6072 x205
karll@csufresno.edu

<http://www.californiawater.org>
<http://www.sjvpartnership.org>

